

Violin I

Ouverture

im italienischen stile (D dur)

FRANZ SCHUBERT.

Adagio.

11

18

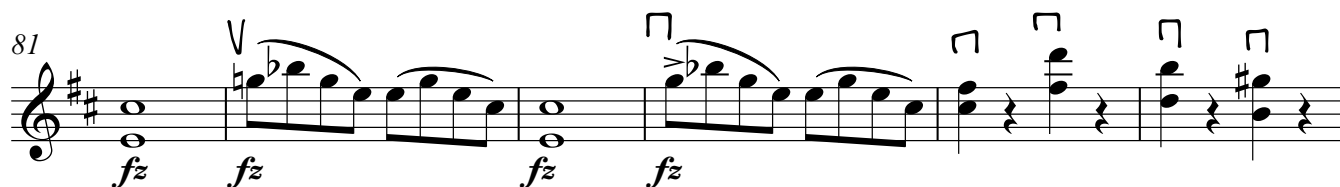
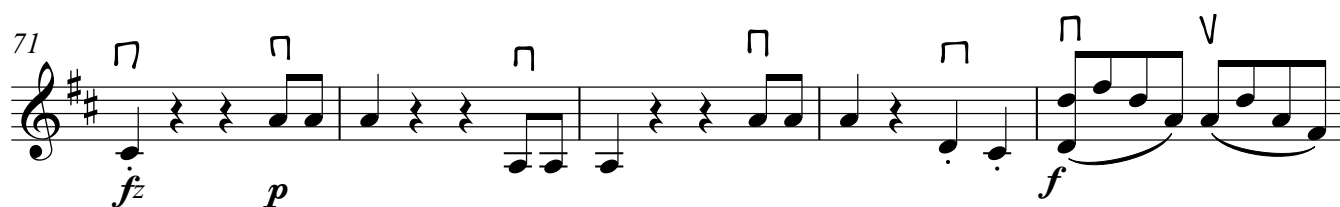
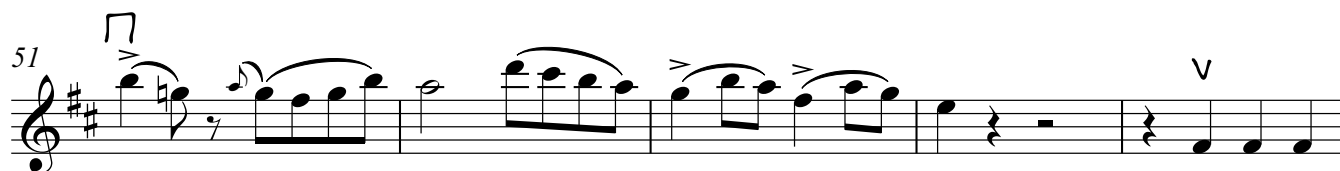
26

33

43

47

Allegro giusto. (♩=100)



91 \square \vee
pp

97 \square \square
fp *fp*

103 \square \square \square \square
fp *fp*

109 \square \square \square \square \square \square
cresc. *fp* *fp*

115 \square \square \square \square \square \vee
fp *fp*

121 \square \vee \vee \square
 \square

126 \square \vee \vee \vee \vee \square
 \square

131 \vee \square \vee \vee \square \vee \vee \square \vee
ff

136 \vee \square \vee \square \vee
fz *fz* *fz* *fz*

141 \square \square \vee \vee \square
p *pp*

[illegible]

153

p *pp*

161

p

166

The musical score for 'The Rose Tree' (166) is written in treble clef with a key signature of two sharps (F# and C#). The melody in the first four measures consists of eighth and sixteenth notes, with a triplet in measure 3. The bass line in measures 9-12 consists of eighth and sixteenth notes, with a triplet in measure 10. The score is divided into two systems of eight measures each.

172


177

cresc.

G

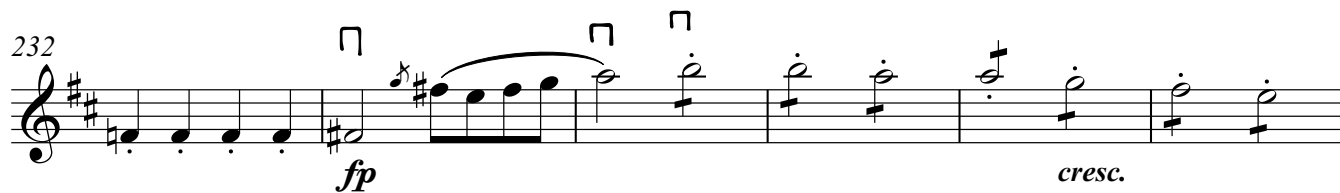
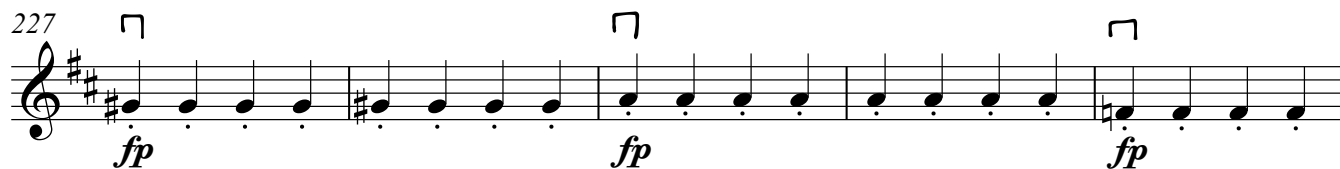
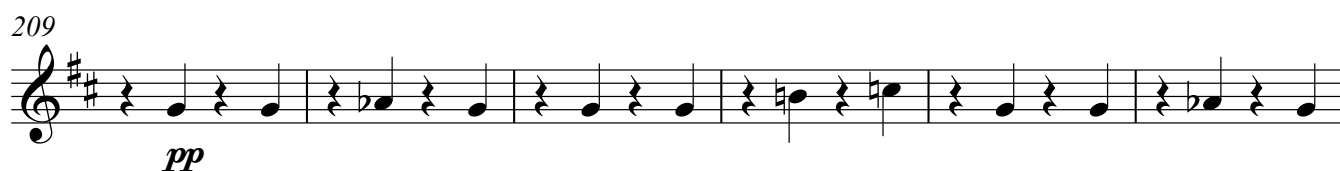
182

186



V.S.

V.S.



238 **H**

fp *fp* *fp*

244

fp *fp*

251

fp

259

ff

263

fz *fz* *fz* *fz*

268 **I**

p *pp*

273

p

V.S.

Violin I

278 *ff* *ff* *p* (Allegro Vivace)

287 *cresc.* *f*

296 *fz* *p* *fz* *p*

303 *ff* *fz* *p*

310 *fz* *p* *ff* *fz*

317

323

330 *fz* *fz*

337 *fz* *fz*

8'00.0"