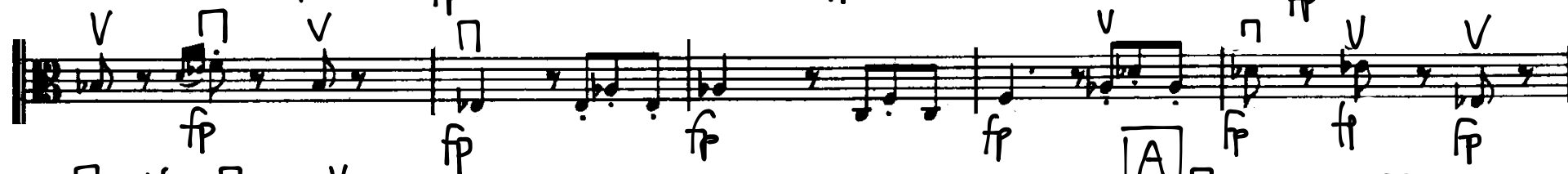
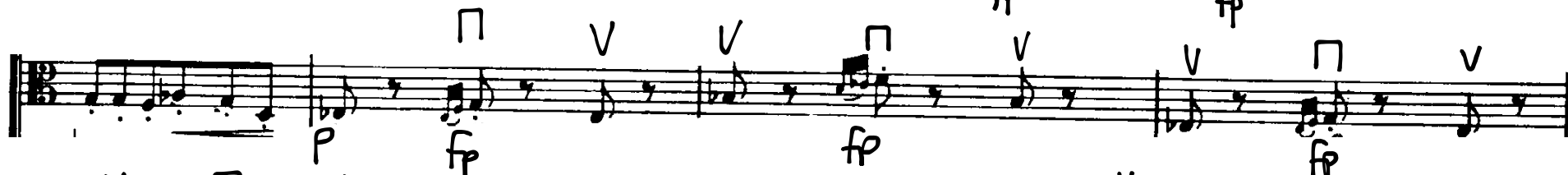
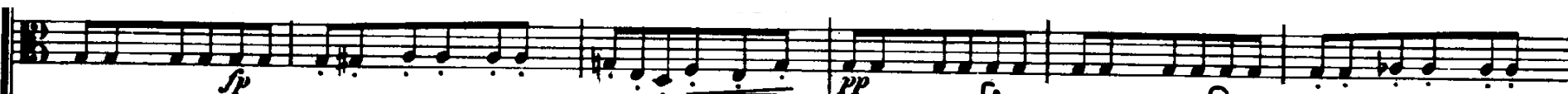




Overture in the Italian Style, D.591
Franz Schubert

viola
partifi.org/aJESU

Adagio



Allegro

fp

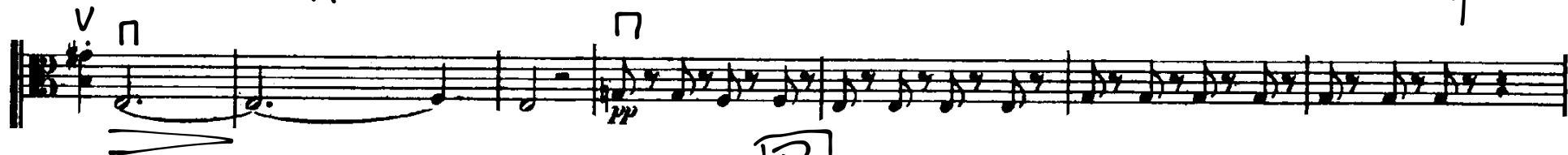
34



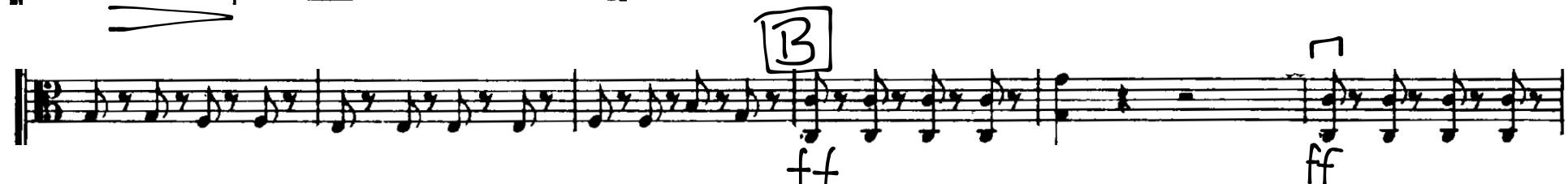
40



46



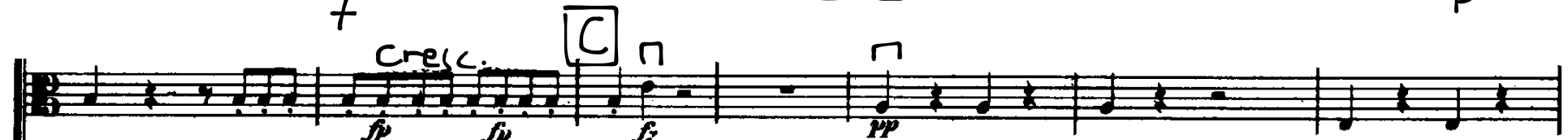
53



59



65



72



80



87



93



99



106



113



123



129



135

F \vee \sqcap

Handwritten musical notation for staff 135. It begins with a treble clef and a key signature of one flat. The staff contains a series of notes, some beamed together. A *fp* (fortissimo piano) dynamic marking is present. Above the staff, there are handwritten annotations: a boxed 'F', a 'v' (accidentals), and a 'sqcap' symbol. A 'pp' (pianissimo) dynamic marking is also present.

142

Handwritten musical notation for staff 142. It continues the melodic line with various note values and rests. A *pp* (pianissimo) dynamic marking is visible.

150

\vee

Handwritten musical notation for staff 150. It features a series of notes, some beamed together. A *pp* (pianissimo) dynamic marking is present. Above the staff, there is a handwritten 'v' (accidentals).

156

cresc.

Handwritten musical notation for staff 156. It begins with a *cresc.* (crescendo) marking. The staff contains a series of notes, some beamed together. Above the staff, there is a boxed 'G' and a 'sqcap' symbol. A *ff* (fortissimo) dynamic marking is present.

162

\vee \vee \sqcap \vee

Handwritten musical notation for staff 162. It features a series of notes, some beamed together. Above the staff, there are handwritten annotations: 'v', 'v', 'sqcap', and 'v'. A *pp* (pianissimo) dynamic marking is present.

168

cresc.

Handwritten musical notation for staff 168. It begins with a *cresc.* (crescendo) marking. The staff contains a series of notes, some beamed together. Above the staff, there are handwritten 'sqcap' symbols. A *ff* (fortissimo) dynamic marking is present.

174

\vee \vee **H** \sqcap \vee \sqcap

Handwritten musical notation for staff 174. It features a series of notes, some beamed together. Above the staff, there are handwritten annotations: 'v', 'v', a boxed 'H', 'sqcap', 'v', and 'sqcap'. A *ff* (fortissimo) dynamic marking is present. At the end of the staff, there is a *fz* (forzando) marking.

180

Musical staff 180, featuring a treble clef and a key signature of one flat. The staff contains a series of eighth and sixteenth notes, with dynamic markings *fz* and *f*. Above the staff, there are two sets of markings: a 'V' followed by a square symbol, and another 'V' followed by a square symbol. The staff ends with a double bar line.

189

Musical staff 189, featuring a treble clef and a key signature of one flat. The staff contains a series of eighth and sixteenth notes, with dynamic markings *ff*, *fz*, *p*, *fz*, and *fz*. Above the staff, the tempo marking *Piu mosso* is written. The staff ends with a double bar line.

194

Musical staff 194, featuring a treble clef and a key signature of one flat. The staff contains a series of eighth and sixteenth notes, with dynamic markings *p*, *fz*, *p*, *fz*, *ff*, *ff*, *fz*, and *fz*. Above the staff, there are three sets of markings: a 'V' followed by a square symbol, another 'V' followed by a square symbol, and a third 'V' followed by a square symbol. The staff ends with a double bar line.

199

Musical staff 199, featuring a treble clef and a key signature of one flat. The staff contains a series of eighth and sixteenth notes, with dynamic markings *fz*, *ff*, *fz*, *fz*, and *fz*. Above the staff, there are two sets of markings: a 'V' followed by a square symbol, and another 'V' followed by a square symbol. A box containing the letter 'I' is placed above the staff. The staff ends with a double bar line.

206

Musical staff 206, featuring a treble clef and a key signature of one flat. The staff contains a series of eighth and sixteenth notes, with dynamic markings *fz* and *fz*. The staff ends with a double bar line.

212

Musical staff 212, featuring a treble clef and a key signature of one flat. The staff contains a series of eighth and sixteenth notes, with dynamic markings *fz* and *fz*. Above the staff, there are four sets of markings: a 'V' followed by a square symbol, another 'V' followed by a square symbol, a third 'V' followed by a square symbol, and a fourth 'V' followed by a square symbol. The staff ends with a double bar line.

217

Musical staff 217, featuring a treble clef and a key signature of one flat. The staff contains a series of eighth and sixteenth notes, with dynamic markings *fz* and *fz*. Above the staff, there are five sets of markings: a 'V' followed by a square symbol, another 'V' followed by a square symbol, a third 'V' followed by a square symbol, a fourth 'V' followed by a square symbol, and a fifth 'V' followed by a square symbol. The staff ends with a double bar line.